



- Extra heat resistance.
- Usable from -4°F to 482°F.
- Non-deformable & long lasting.
- Dishwasher safe.



**EXOGLASS® BENT SPATULA**

Flexible blade made of an innovative composite material which is non-porous, easy to clean and can be sterilized.

Item #	Overall L"	Blade L"	W"	Wt oz.
112686	17	11 3/4	1 1/2	8



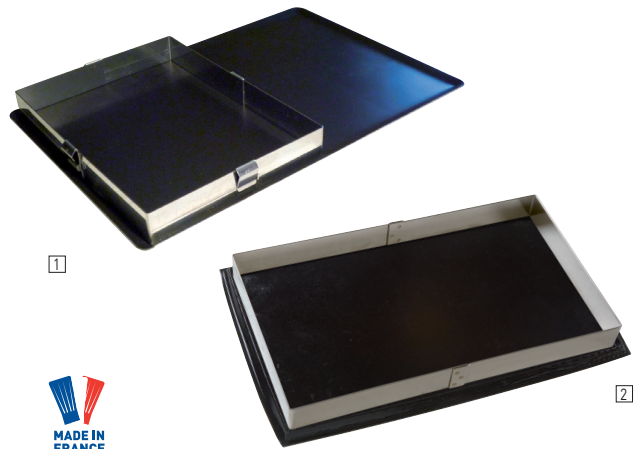
LEARN MORE ABOUT THIS PRODUCT IN OUR CHEF LIFESTYLE BLOG.



**OFFSET SPATULA**

Stainless steel flexible blade, plastic handle. Dishwasher safe.

Item #	Blade L"	Wt oz.
112670	6 1/4	4
112672	8	4
112674	10 1/4	6
112676	12 1/4	7



**STAINLESS STEEL EXTENDABLE FRAME**

Item #	4 Way Standard Size"	Maximum"
371421	11-3/4 x 8 Wide	22 x 14-1/4 Wide
371422	8 x 6 Wide	14-1/4 x 10-2/3 Wide

**STAINLESS STEEL FRAME**

For assembly of layers of biscuit, coulis or cream, in dessert. Great with Flexipat® sheet (321201).

Item #	L"	W"	H"
371013	21 5/8	14	1 3/4



**SPATULA**

Stainless steel flexible blade. Molded handle. Dishwasher safe.



Item #	L"
112650	7 7/8
112652	9 7/8
112654	11 7/8
112656	13 7/8